



# WE GO GARDENING

Newsletter of the West Chicago Garden Club

[www.westchicagogardenclub.org](http://www.westchicagogardenclub.org)

Volume 18 Issue 2 February 2014

## Inside this issue

Non-Club Events & Club Information	2
Planned WCGC Events	3
News from Kruse	4
Plant Sale 2014	5
Growing Place Article	6

**Babysitting**—The Club provides babysitting during its regular monthly meetings when held at Faith Community Church. There is no fee to you for the service and no reservations are necessary.

**Rides**— Need a ride to the meeting? Call Billie Childress at 231-1791 the Wednesday before the meeting.

## February 27th Meeting : "Sex in the Soil" by Lynn Bement

Lynn Bement, widely known as the CompostQueen, revels in sharing her knowledge of composting, vermiculture, organic lawn care, growing edible plants, organic pest and disease control, and organic gardening. A Master Gardener for 14 years, Lynn holds a horticultural certificate from the Morton Arboretum, a Master Composter certificate from Michigan State University, and a certificate in composting from Iowa State University.



Lynn is known throughout the Chicago area for her popular classes at the Morton Arboretum, the Chicago Botanic Garden, and the Chicago Center for Green Technology, and for her work with children in school programs. Her local horticultural business, The Organic Garden Coach, offers individuals, businesses, municipalities and corporations a range of services to promote healthy gardens and landscapes.

**Faith Community Church at 910 Main Street in West Chicago**

**6:45 - refreshments and gathering**

**7:00 - brief business meeting**

**7:15 - speaker**

**Next Meeting: Thursday, March 27th:**

**"Edibles in Small Space" with The Growing Place**

**LOOK FOR NEW MEMBER**

**Barbara Carlisle AT THE February MEETING!**





### Upcoming events (outside the club)

**Cantigny:** Greenhouse Tour. March 4, 11AM—12PM. Registration requested. 630-260-8162. Free program with paid parking fee. Rhododendron Society: Shady Characters. March 8, 11AM—1PM. Presentation will explore various shade tolerant plants. Free program with paid parking fee.

**Growing Place:** Landscaping 101: Backyards. March 1, 10AM at Aurora location. Find out how to personalize your backyard. Registration required—630-355-4000. New and Noteworthy Plants for 2014. March 8, 10AM. Experience a colorful presentation of the hottest new plants for 2014. Registration recommended—630-355-4000. Many more classes listed online at: [www.thegrowingplace.com/classes.html](http://www.thegrowingplace.com/classes.html)

**Chicago Botanic Garden:** Orchid Show, daily Feb 15—March 16. 10AM—4PM. Ticket purchase required—more details at: [www.chicagobotanic.org/orchid](http://www.chicagobotanic.org/orchid)

**Heinz Brothers:** Bonsai for Beginners. March 8, 11AM—12PM. \$10. Includes bonsai starter plant and pot. St. Charles.

You're invited to come explore, get inspired, learn and add some beauty to your garden at



2010 East Main St. (Rt. 64), St. Charles  
630.377.6288 [www.HeinzBrothers.com](http://www.HeinzBrothers.com)

Your Gardening Source...



# PLATT HILL NURSERY

[www.platthillnursery.com](http://www.platthillnursery.com)

Bloomington  
222 W. Lake St.  
(630) 529-9394

Hours: Mon-Sat 9am-6pm  
Sun 10am-5pm

Carpentersville  
2400 Randall Rd.  
(Randall & Huntley Rds.)  
(847) 428-6767

### Club information

[www.westchicagogardenclub.org](http://www.westchicagogardenclub.org)

West Chicago Garden Club  
P. O. Box 313, West Chicago, IL 60186  
[westchicagogardenclub@gmail.com](mailto:westchicagogardenclub@gmail.com)

### Membership information

Dues for 2014: Individual: \$15 Family: \$25

### Board Meetings

2nd Thursday each month at 7 p.m.

### Regular meeting location

Faith Community Church  
910 Main Street, West Chicago

### 2014 WCGC BOARD:

President:

Keith Letsche, 630-293-0192, [keithletsche@aol.com](mailto:keithletsche@aol.com)

Vice President:

Dick Darrah, 630-584-1900, [info@bwdarrah.com](mailto:info@bwdarrah.com)

Treasurer:

Barb Darrah, 630-584-1900, [info@bwdarrah.com](mailto:info@bwdarrah.com)

Secretary:

Kathy Reynolds, 630-293-7462,  
[kreynolds2656@sbcglobal.net](mailto:kreynolds2656@sbcglobal.net)

Program Co-Chairs:

Pauline Briggs, 630-545-2234, [pmbiggs@juno.com](mailto:pmbiggs@juno.com)  
June Luther, 630-876-1295, [june@markluther.com](mailto:june@markluther.com)

Information Director & Publicity:

Melissa Birch, 630-621-0128, [melissabirch@gmail.com](mailto:melissabirch@gmail.com)



# Planned WCGC Events - 2014

Date	Speaker/Organizer	Topic/Event	Date	Speaker/Organizer	Topic/Event
23 Jan	WCGC Members	Home Grown	26 Jun	Bill Karges	*at the Kruse House
27 Feb	Lynn Bement	Sex in the Soil	24 Jul	All members	President's Picnic
27 Mar	Growing Place	Edibles in Small Space	28 Aug	Chicagoland Gardening	Made in the Shade II
24 Apr	Dolly Foster	Tips for the New Gardener	25 Sep	June & Pauline	Bulb Bingo
17 May	ALL MEMBERS!	PLANT SALE!	23 Oct	Jo Ann Loebel	Pressing Flowers
22 May	TBD	TBD	20 Nov	All members	Dinner & Garden Dollar Auction



*An Investment That Grows*

THE GARDEN CENTER IS BLOOMING WITH IDEAS!

**MEYER LANDSCAPING, INC.**  
Nursery, Landscaping Design & Construction

27W067 North Avenue  
West Chicago, IL 60185  
Tel: (630) 293-4800

VISIT OUR WEBSITE FOR SPECIALS!!!  
[WWW.MEYER-LANDSCAPING.COM](http://WWW.MEYER-LANDSCAPING.COM)

LARGE TREES & SHRUBS, ROSES, PERENNIALS, & ANNUALS

SPRING HOURS  
MON-SAT: 9-5  
SUN: 10-4 (4/15-6/30)

## Spring Bluff Nursery, Inc.

*Specializing in growing landscape quality trees and shrubs*

**Retail Garden Center  
Landscape Design & Installation  
Trees, Shrubs & Perennials**

41W130 Norris Rd.  
Sugar Grove, Illinois 60554

630.466.4278  
[www.springbluffnursery.com](http://www.springbluffnursery.com)  
[plants@springbluffnursery.com](mailto:plants@springbluffnursery.com)

*Growing, learning and educating since 1979...*

## Celebrating 87 Years & Still Growing

A lot has changed over 87 years but our commitment to our customers and to our community has not.

**Quality Plants & Expert Service**  
... Since 1925



*Come to the Grower*

**WASCO NURSERY & GARDEN CENTER**

**630-584-4424**

6 miles west of Randall Road on Route 64, St. Charles  
1 mile west of Wasco  
[www.wasconursery.com](http://www.wasconursery.com)

160 Acres of Nursery Stock \* 10 Acre Garden Center \* Landscape Design & Installation





News from Kruse

by Billie, Angie, and Tom



Picture to the left was taken February 15, 2013. Where the heck is the snow? This year is a different picture! But..... never mind all that snow out there, we are ready for a new year in the Garden.

Since we have new GC members and us old ones need to have a review, let me spend a moment on how the GC got hooked up with this project. The Kruse House Museum at 527 Main Street is run and cared for by the WC Historical So-

ciety. Back in 1998 that group saw the need for garden restoration and maintenance. The Kruse family was avid gardeners and the house wasn't complete without gardens. They wisely went about reviving the town's dormant GC as a means to accomplish this task. Over the past dozen + years our GC has stuck with this commitment and many members have generously contributed plants and hours of work. It's something we should be proud of! Visitors are delighted with tours of house and garden. They are offered a glimpse into an important historical piece of our community.

Currently, Tom Fessler, Angie Sadauskas, and Billie Childress coordinate efforts for the garden but we would dearly love to have help. We traditionally work Monday mornings but all things are negotiable. We always start out with spring clean-up in April. So let us know you are willing to participate! Gardens always need tweaking but our overarching goal is for low maintenance. It's a process but we are slowly eliminating invasive stuff and shrubs and trees are maturing.

Last year Chuck and Shirley donated a lovely Gingko tree and we also installed a weeping Norway Spruce in memory of Keith's aunt Dorothy. Pam Lurz and her husband rebuilt the stone wall which made the whole garden look better! Your interest, help, and participation in this project is always **greatly** appreciated. We look forward to working with you!

And we are off and running.....Tom, Angie, & Billie

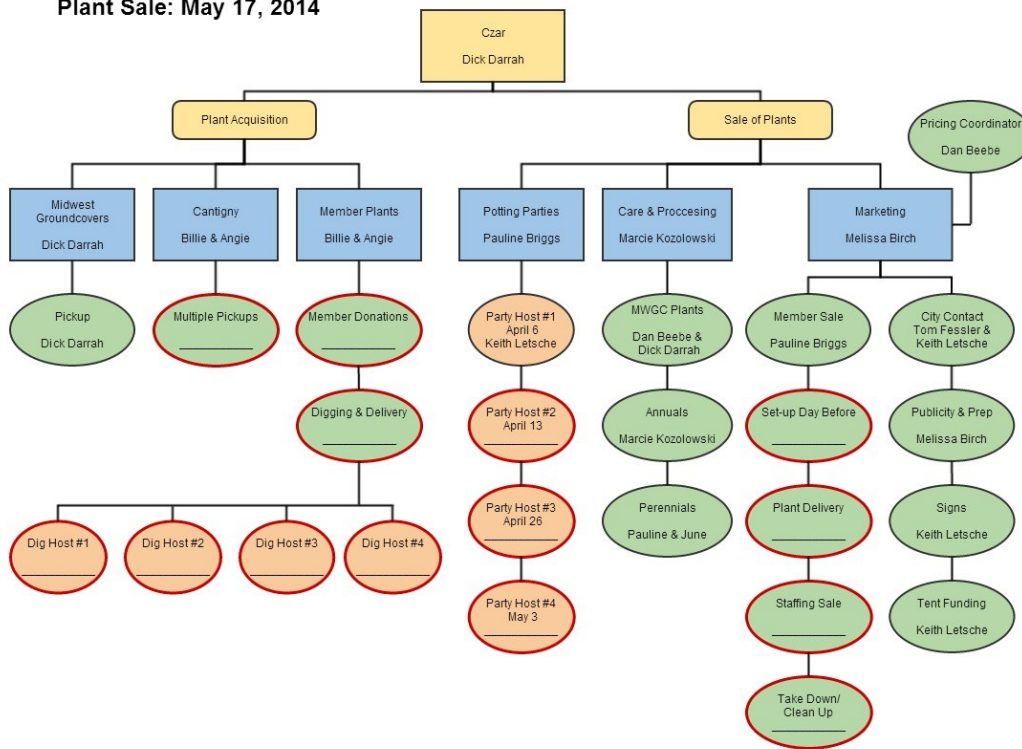


**PLANT SALE 2014**

by Dick Darrah

Our annual Plant Sale is not only a fun activity with a chance to bond with club members, but it is also extremely important to the financial health of the club. Without the earnings from the Plant Sale we would not be able to pay speakers for our meetings, finance

Plant Sale: May 17, 2014



Bulb Bingo, pay for our President’s Picnic, arrange for Field Trips, or do much of anything. Our dues really don’t cover even a fraction of the costs of running the club with the features we all want.

The above Plant Sale Organization Chart shows most of the major activities involved in preparing for and putting on the Plant Sale. Many members have already volunteered to assume areas of responsibility, but we still have some major positions of responsibility that need to be filled – we have outlined these in red. Please consider volunteering to fill one of these positions.

If you’re interested in a position and would like to know more about it you can email Dick Darrah at [info@bwdarrah.com](mailto:info@bwdarrah.com) to get details. Also, you can get more information at our February Club Meeting. If you take on one of the open positions you are not expected to do all the work yourself. What is expected is that you will recruit family, friends and other members to assist you in getting that particular job done. All of these jobs have been done by someone in the past and they will be very happy to share their experiences with you to help you accomplish your goals.

Family owned & operated  
**Prestige**  
 NURSERY GARDEN CENTER INC.  
 28 W. 761 Army Trail Rd, Bartlett  
**(630)289-4868**  
[www.prestige-nursery.com](http://www.prestige-nursery.com)  
*Outdoor living done right...*  
 design | build | maintain | enjoy!  
 8 acres of locally grown quality plants



## The Benefits of Cold and Snow

by Heather Prince of The Growing Place

A cold, snowy winter may be hard on us, but there are great benefits for the garden. Our negative temperatures in January may have impacted populations of some common insect pests. Research by The Morton Arboretum and U.S. Forest Service has indicated that some overwinter insects can be killed off by extreme cold. Each type of insect overwinters differently.

Bagworm and gypsy moth will suffer when they experience extended negative temperatures. Because their cocoons and egg cases are exposed on tree trunks and branches, they are more susceptible to temperature fluctuations. If they have found a protected spot under eaves or shutters, then they will most likely survive.

Japanese beetles are tucked away in the soil under the snow. Right now, they are a grub burrowed deep in the ground. They are nicely insulated from the cold and will probably not be killed off in significant numbers.

Emerald ash borer (EAB) is very adapted to cold. They will survive extreme negative temperatures, to a point. Research from the University of Minnesota indicates that EAB larvae had a 34% mortality rate at -10°, 79% mortality rate at -20°, and a 98% mortality rate at -30°. Our area registered an official low of -16° during the cold snap. There are many additional factors such as where trees are located, if they are older with thicker, more insulating bark, or if they are in a protected corner. What does this mean? We may see some die off of borers, but not enough to eliminate the threat.

Snow cover offers many benefits for our plants in the landscape. A thick layer of snow insulates perennials, preventing them from heaving in the freeze/thaw cycle. It also keeps tender stems and buds from freezing. Snow melt slowly adds water back to the soil in late winter, ensuring our trees and shrubs start out the season with plenty of moisture. This is particularly important for evergreens as they need water year round.

As gardeners, let's celebrate the cold and snow! It will make for a great gardening season this year.

**FREE ESTIMATES • FULLY INSURED**

- 24-Hour Emergency Storm Damage Service
- Crane Removal
- Tree Trimming
- Tree Removal
- Stump Removal
- Land Clearing
- Tree Spraying
- Deep Root Feeding

*Family owned and operated for over 15 years!*

Experience  
**The Growing Place**  
Garden Center

Growing Place grown plants • Beautiful gardens  
Special events & activities • Landscape services

**Opening Day March 29!**

Naperville...	Aurora...
630.355.4000	630.820.8088
25w471 Plank Rd	2000 Montgomery Rd
<a href="http://thegrowingplace.com">thegrowingplace.com</a>    Find us on Facebook!	