



WE GO GARDENING

Newsletter of the West Chicago Garden Club

www.westchicagogardenclub.org

Volume 13 Issue 8 August 2010

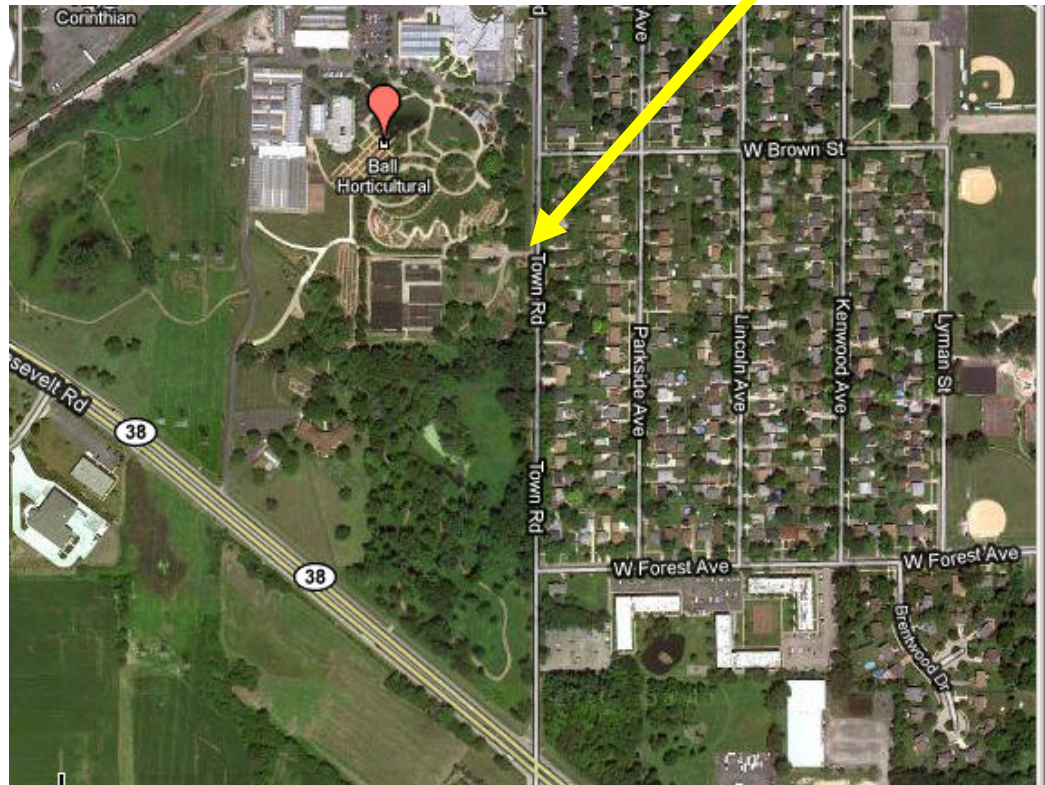
Inside this issue

Non-Club Events	2
September Meeting	
Calendar of Events	3
Club information	
News from Kruse	4
Kruse Open House and Posey Mosey	5
Ornamental Grasses	6

August 26th Meeting : "Tour of Ball Seed Display Gardens" - start time 6:30!

West Chicago Garden Club members will be treated to a **private** evening tour of the wonderful gardens at Ball Seed. These gardens were recently featured in the Garden Conservancy's Open Days.

Meet at the Ball Seed parking lot off Town Road:



Babysitting—The Club provides babysitting during its regular monthly meetings when held at Faith Community Church. There is no fee to you for the service, but if you plan to use it, please **call Linda Harlson** at 377-5750, so we can plan for the right number of children.

Rides— Need a ride to the meeting? Call Billie Childress at 231-1791 the Wednesday before the meeting.



Next Meeting: see information on page 2



Upcoming events (outside the club)

Morton Arboretum: Steelroots: Tobin at The Morton Arboretum. Large sculpture exhibit cast from actual plant roots, on display through January 2011. <http://www.mortonarb.org/steelroots>.

Heinz Brothers Greenhouse: Plant Spring Blooming Bulbs! Sep 18, 10 - 11 a.m. \$10 program fee, please call 630-377-6288 to register.

Cantigny: Ask the Grower: Meet in the Idea Garden with your bag lunch and talk with a Cantigny grower, Jill Weiss. Advanced registration requested, seating limited, free! Wednesday, Aug 25, at noon. Call 630-260-8162, registration form at <http://cantigny.org/events/event.aspx?id=2fef38c-fc72-df11-879a-002264037ab0>.



An Investment That Grows

THE GARDEN CENTER IS BLOOMING WITH IDEAS!

MEYER
LANDSCAPING, INC.
Nursery, Landscaping Design & Construction

27W067 North Avenue
West Chicago, IL 60185
Tel: (630) 293-4800

VISIT OUR WEBSITE FOR SPECIALS!!!
WWW.MEYER-LANDSCAPING.COM

LARGE TREES &
SHRUBS, ROSES,
PERENNIALS,
& ANNUALS

SPRING HOURS
MON-SAT: 9-5
SUN: 10-4 (4/15-6/30)

You're invited to come explore, get inspired, learn
and add some beauty to your garden at



2010 East Main St. (Rt. 64), St. Charles
630.377.6288 www.HeinzBrothers.com

Your Gardening Source....



September 23rd Meeting: Garden Paths and Walkways

Your input needed, want a new path designed just for you?

Mary Saba, our September meeting speaker, has been in the design business (both interior and landscape) for 30 years and has worked for the Growing Place in that capacity for the last seven years. Mary would like to incorporate a design for one of our members into her presentation.



She invites any WCGC member to send her **digital photos of an area of their garden where they would like to construct or improve a path**. Pictures need to be emailed to her at landscapeatthegrowing-place.com. Put WCGC in the subject line of the email.

She can't promise to use all that are sent. However, she will use one set and make recommendations designed specifically for that site.

Photos must reach Mary by September 9th!



Calendar of events - 2010

Date	Speaker/Organizer	Topic/Event	Date	Speaker/Organizer	Topic/Event
August 26	Susan Schmitz	Club Meeting - Tour of display gardens at Ball Seed	October 21	Joannie Rocchi	Bulbs from A to Z
September 23	The Growing Place	Club Meeting - Paths and Walkways	November 18	All Club Members	Potluck Dinner Garden Dollar Auction
October	Billie & Angie	Gazing Ball Workshop	 <p>SHADY • HILL • GARDENS <i>Home grown plants since 1974</i></p> <p>Elburn, Illinois • (630) 365-5665 www.shadyhill.com</p>		



**Gardening requires lots of water...
most of it in the form of perspiration.**
quote / saying by Lou Erickson



Residential and Business Services

Computer Repair, Setup, Tune-up,
Wireless Networks, Hardware
Upgrades, Virus Removal & more!

Computer-Repair-Now.Com

"Let us fix it so you can relax"

Lou Horton Jr.
Owner

(630) 444-7220

Email: support@computer-repair-now.com

**I appreciate the misunderstanding
I have had with Nature over my
perennial border.
I think it is a flower garden;
she thinks it is a meadow lacking grass,
and tries to correct the error.**
quote / saying by Sara Stein, My Weeds



Club information

www.westchicagogardenclub.org

West Chicago Garden Club
P. O. Box 313, West Chicago, IL 60186
(630) 585-4005

Membership information

Dues for 2009:
Individual: \$15 Family: \$25

Board Meetings: 2nd Thursday each month at 7 p.m.

Regular meeting location

Faith Community Church, 910 Main Street, West Chicago

2010 WCGC BOARD:

President: VACANT

Vice President:
Jeff Handel (630) 231-6765, jjhandeldds@yahoo.com

Treasurer:
Barb Darrah (630) 584-1900, info@bwdarrah.com

Secretary:
Dee Soustek (630) 393-0652, dsoustek@aol.com

Program Chair:
Lou Horton (630) 293-7735, lehorton85@ameritech.net

Information Director:
Elaine McCluskey (630) 293-4773,
emclluskey@sbcglobal.net

Plant Sale Co-Chairs:
Dick Darrah (630) 584-1900, info@bwdarrah.com
Tom Fessler (630) 231-0535, fess2000@aol.com



News from Kruse by Angie & Billie, Kruse House Garden Coordinators

Huge success! That is our view of the August 1st Secret Garden and Posey Mosey event. We estimate that 300 guests enjoyed the gardens and goodies. Thank you to all who baked and volunteered your time. There were many things to be done but your generosity and talents really made a difference! Please take a bow for 'job well done'. Thanks again, you are a wonderful group to work with!



See page 5 for more on this event!

Well, August weather certainly delivered the 'dog days of summer'! It was so hot some days that working outside was next to impossible. Just the kind of conditions that make you ponder the meaning of 'dog days'. Here is what wikianswers.com has to say.

'The dog days were the days when the Dog Star, Sirius, rose just before sunrise. Ancient Romans believed that the hot days of late summer were caused by the Dog Star, and thought that dogs went mad during this time (also that wine spoiled, people became hysterical, and seas boiled!). So a dog day afternoon would be the afternoon of one of the very hot, sticky days at the end of summer". The specific days that were traditionally referred to as the Dog Days of Summer were from July 3 to August 11.

But never mind the weather, the garden has many pleasures to share in August. The Japanese anemones are delightful. We don't have any at the Kruse Garden yet, but the plan is to install several varieties this fall. Honorine Jobert, introduced in 1858 from France has single delicate white flowers. That is Angie's favorite, but September Charm, a 1932 introduction with single rose-pink blossoms is a charmer as well. Japanese anemones are sturdy plants, (no staking), and sport good looking glossy dark green foliage. They are vigorous but not invasive and will dependably bloom from August until frost.

They are a couple of shrubs in the garden that got a lot of attention at the 'open garden' event. The Smokebushes, especially, drew a lot questions and we repeatedly explained the process of hard pruning each year. Yup, Tom pruned them to a couple feet this spring and the new growth is a riot of spectacular reddish-purple foliage. You don't need flowers with foliage like that! The paniculata Hydrangeas donated 2008 by The Growing Place and Platt Hill Nursery also were noticeable to our visitors. They have settled in nicely and the showy conical flower heads produce a beautiful display July through August! They are a valuable addition to the garden!



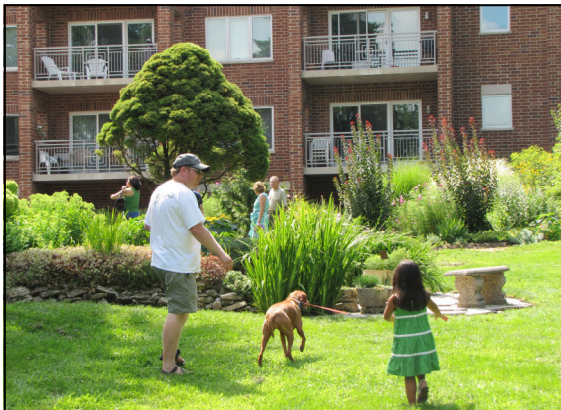
Speaking of pruning.....we are convinced that we need to prune, prune and prune some more! We are all familiar with deadheading, shaping, and pinching our perennials, but cutting back select perennials by 1/3 or 1/2 has many benefits. Important results include height control, stagger or delay bloom time, and regeneration. Try it! It really works well! Tracy Di-Sabato Aust's The Well-Tended Perennial Garden is an excellent resource to learn more.

So sharpen the shears....so long for now. **A&B**



SECRET GARDEN AT THE KRUSE HOUSE & POSEY MOSEY GARDEN STROLL

Did you find time on Sunday afternoon, August 1st, to wander the Kruse House garden, the Benshish's lovely yard, and the gardens of the Woodboro townhomes? If not, you missed a real treat. Thanks to those who helped host a steady line of visitors that totaled about 300 when the afternoon was over. Special thanks to the garden owners and caretakers, who made things look so lovely. The refreshment provided by our club members were very tasty. Special thanks to the WC Historical Society for helping with tables, chairs, and lots of tours! And many thanks to Garden Walk committee chair Carole Bates and her helpers for making it all come together so well.





Ornamental Grasses for the Perennial Garden *by Heather Prince from The Growing Place*

Ornamental grasses seduce us with their flowing foliage, spectacular flowers, and lovely fall colors. They are most distinctive in late summer, autumn, and winter. With such a variety of shapes and sizes, they are equally at home in the informal or formal garden. Grasses can be found in nearly every site from sun to shade, dry to moist, and are generally easy to grow. At The Growing Place, these are five of our favorite varieties that thrive in the Chicago area.

***Calamagrostis x acutiflora* 'Karl Foerster'** (Feather Reed Grass)

Widely used, this popular grass has a distinct upright, clumping habit. Feathery, silvery-pink paniced flowers emerge in late spring on reed-like stems. As the flowers mature, they take on a wheat-like appearance that persists into the winter. At 4 to 5 foot tall, it makes an excellent screening plant

***Hakonechloa macra* 'Aureola'** (Variegated Japanese Forest Grass)

Elegant arching clumps of vividly striped gold and lime green foliage are stunning cascading over a rock wall or along a path in the shade. The soft arching leaves turn a reddish pink in the fall. Only 18 to 24 inches tall and wide, it is very slow to spread.

***Molinia arundinacea* 'Skyracer'** (Tall Moor Grass)

An underused beauty, its long, graceful, thin flower stems rise dramatically above soft clumping foliage. The grass itself grows about 3 feet tall with its thin flower stems rising 6 to 8 feet above the foliage.

***Panicum virgatum* 'Northwind'** (Switch Grass)

An extremely upright clump-forming selection that is gaining recognition for its sheer beauty. Its tough, broad, sage-green leaves stand bolt upright even in the strongest of winds. In late summer it has a magnificent show of autumn colors and upright floral spikes. It is 5 to 6 feet tall.

Sporobolus heterolepis (Prairie Dropseed)

Dense arching clumps of fine textured, emerald green leaves give a fine texture to the garden. Thin, arching flowering stalks of wispy, popcorn scented seed heads add to the beauty of this eye catching native grass. It grows only 2 to 3 feet tall and wide.

We have many grass selections planted in our gardens at both locations of The Growing Place. We invite you to come and view these beauties - you may just want to have them all!



Phil Graf
Certified Arborist
 Bus: 630/347-4899
 Fax: 630/578-1304
www.graftreecare.com
Tree Care
 For Better Trees!



The Growing Place
 Naperville, 355-4000 & Aurora, 820-8088
 Learning Garden Strolls... 9/4 & 10/2
 Old House Anniversary PARTY... 9/11
 Fall Fest... 9/18 & 19
 We can help you Day... 10/16
 Stop by, see Facebook or Email for Sales!
www.thegrowingplace.com
 for helpful tips, plant intros, & more!

Come to the Grower

- * Over 160 Acres of Fine Nursery Stock
- * Landscape Design and Installation
- * A Complete 10 Acre Retail Garden Center including Fountains & Water Garden Supplies

Since 1925...the only name you need to know



WASCO NURSERY & GARDEN CENTER
 6 miles west of St. Charles on Rt. 64
 1 mile west of Wasco
www.wasconursery.com
630-584-4424



PLATT HILL NURSERY
www.platthillnursery.com
 Hours: Mon-Sat 9am-6pm
 Sun 10am-5pm
 Bloomingdale
 222 W. Lake St.
 (630) 529-9394
 Carpentersville
 2400 Randall Rd.
 (Randall & Huntley Rds.)
 (847) 428-6767