

# We Go Gardening

Newsletter of the West Chicago Garden Club



## April 23 Meeting

St. Andrew Lutheran Church

6:45PM Arrive & Mingle  
7:00PM Business Meeting  
7:15PM Program

## Featured Contents

Come to Potting Party #3	2
Twilight Tuesday Hosts Needed	3
Adopt a Highway	3
Nature Note: Fuzzy Stuff	4
Sign Up for June Field Trip	4
Plant Sale News	5
Spring Scholarship Awarded	6
2nd Saturday at the Kruse Garden	6
News from Kruse	7
Getting to Know: Edith Makra	8
Our Fantastic Volunteers!	9
Growing Native—Not Throwing Shade - Let's Talk (Arbori)Culture!	10
Local Events for Gardeners	12
Upcoming Programs & Events for 2026	14

## Painting Your Garden with Plants: Shade

Ruth Kyme

Nina Koziol is a horticulturist and garden writer who tends plants on a deer-infested acre about 40 miles from Chicago. She has written garden articles for the Chicago Tribune for 22 years as well as for Chicagoland Gardening, Old-House Journal, Organic Gardening and The American Gardener. Nina writes for ILCA's The Landscape Contractor, PlantersPlace.com, and for The Chicago Botanic Garden's web site. She has been teaching horticulture, garden design and residential landscape design history at the Chicago Botanic Garden and The Morton Arboretum since 1997.



Painting Your Garden with Plants: Shade: A garden shaded by trees or buildings is often a challenge for the gardener who is faced with low light levels, tree roots, and soil that is often dry. Through Nina's presentation, "Painting Your Garden With Plants: Shade," we

will discover solutions and ideas for artful plantings that can help us create effective combinations with optimal color, texture, and form. Take your shade garden beyond hostas with native wildflowers for spring and flowering perennials for summer and fall.

We are still looking for volunteers to Setup/Clean up for this month's meeting and to host the refreshment table. [Click Here to sign up using Sign Up Genius](#)



# Come to Potting Party #3

Pamela Darrah

We have had two successful Potting Parties and we are on track for having enough plants for the sale. However, traditionally, the last 2 potting parties are when we pot up the most plants.



**This Saturday's Potting Party (SATURDAY, April 18) will be at 1:00pm in the afternoon.** This is the first time we have tried having an afternoon potting party on a Saturday. (Traditionally, we have had Saturday mornings and Sunday afternoons.)

We are trying this due to some requests that it would be easier to donate plants to the Saturday event if Saturday morning was available to go out into their yards to dig up plants.

If you have plants to donate, please bring them by near the beginning of the potting party. It helps if you let us know you will be bringing plants by [signing up on SignUp Genius](#), but if you decide you have something and haven't signed

up, just bring them by around 1:00pm.

All potting parties are held at our tents behind the Park District building at [830 Hawthorne Lane](#) in West Chicago

These are fun events and everyone is welcome to come out and participate. It does help our planning if you can sign up in advance on [SignUp Genius](#), but if you suddenly find yourself available on Saturday Afternoon, please just come on by.

## About our Club

The purpose of the West Chicago Garden Club shall be to increase interest in gardening through sharing our ideas and knowledge, promoting and participating in community beautification, and protecting and promoting a clean, sustainable environment in which to live.

### Meetings & Dues

We meet on the 4th Thursday from January to October, the 3rd Thursday of November and do not meet in December.

Most meetings are at St. Andrew Lutheran Church in West Chicago (155 N Prince Crossing Rd) at 7:00pm. Occasional meetings may be held elsewhere and that information can be found in our newsletter or website.

The Board meets on the 2nd Thursday at St. Andrew Lutheran Church at 7:00pm.

Dues for 2026: Individual \$20  
Family \$30

### Contact Us

Website:  
[WestChicagoGardenClub.org](http://WestChicagoGardenClub.org)

Address:  
P.O. Box 313  
West Chicago, IL 60185

E-mail:  
[WestChicagoGardenClub@gmail.com](mailto:WestChicagoGardenClub@gmail.com)

Facebook:  
[facebook.com/westchicagogardenclub](https://facebook.com/westchicagogardenclub)

Instagram:  
westchicagogardenclub

### Board Members

President: Dan Beebe  
Vice President: Janet Frogner  
Treasurer: Karen Sherman  
Publicity Director: Ruth Gauss  
Program Director: Ruth Kyme  
Secretary: Christina Covarrubias  
Director at Large: Kurt Schramer  
Information Director:  
Pamela Darrah  
Member Services Director:  
Lisa Marie Vogt  
Plant Sale Chair:  
Mary Schramer & Dan Beebe  
Kruse Garden Chair: Open

## Twilight Tuesday Hosts Needed

Ruth Kyme



Twilight Tuesday is an opportunity for garden club members to share their garden (for most of us, this is our favorite place to garden) with other members from the club. They happen on Tuesdays. They are casual, beginning at 6:30 PM. We are looking for gardens that have not been shown before. They don't have to be large, professionally designed, established, new, perfect, or finished (what garden is?) and they don't have to be in West Chicago (we have members from all over DuPage and Kane counties). It provides an

opportunity to get to know other club members, discuss plants with other people who 'get it' and sometimes get advice from fellow gardeners about how to solve challenges. You can serve treats and beverages if you like but it is not required. You can give away plants and seeds if you have some to share but not required. If you have shown your garden in the past, please allow others a chance to sign up first. You can begin to sign up now. The first opportunity is May 19th.

You can [sign up on Signup Genius now \(click here\)](#). There are nine Tuesdays available May- August. Don't be shy! We would love to see your garden.

## Adopt a Highway

Dan Beebe

It is time for our Spring Adopt A Highway roadside pickup. We will be meeting on **Saturday, May 2nd** at 8:45am in the parking lot of the Park District garage at 830 W Hawthorne Lane ([Click here for Google Map](#)).

We will start our cleanup at 9:00am Expect to spend about 1 to 2 hours walking on relatively flat sidewalk & grass.



Once a year, all volunteers will need to sign a liability waiver stating that you won't blame the city if you get hurt during the roadside

pickup. Copies of the waiver will be available at Saturday's event. In addition, all participants should watch the State of Illinois' Adopt a Highway video that can be viewed by clicking on this link: [AAH Video](#).



Orange safety vests, grabbers and garbage bags will be provided. Some roadside trash can be soggy, especially in the Spring, so please bring your own gloves to protect your hands. As the weather in early May can be a bit unpredictable, please check the weather forecast and dress accordingly.

[Sign up to help at Sign Up Genius \(Click here\)](#)

## Important Plant Sale Dates

### Perennial Potting Parties

April 4 (Saturday) from 9:30 AM to 12:30 PM  
April 12 (Sunday) from 1 PM to 4 PM  
April 18 (Saturday) from 1PM to 4PM  
April 26 (Sunday) from 1PM to 4PM

### Other Important Dates

Label Plants for Plant Sale: May 9, 9 AM to 12 PM  
Members Only Plant Sale: May 14  
Set up Plant Sale and move plants to tent: May 15  
Blooming Fest Plant Sale: May 16

## Nature Note: Fuzzy Stuff

Kerry Perry

Looking out my kitchen window recently the view seemed really fuzzy. Yikes! Did my eyesight change overnight? Did I need new glasses? No, I quickly realized it's spring and the fuzzy, slender catkins of my weeping willow tree were unfurling. Catkins are small, cylindrical flowers that dangle from the branches in a flowing motion.

The pussy willow tree had also changed from furry gray catkins into larger dense masses of yellowish florets.

Take a close look – nature is magical.



Weeping Willow



Pussy willow catkin florets



## Sign Up for June Field Trip

Laura Barron

Anderson Japanese Gardens & Rock Valley Garden Center in Rockford, IL

Tuesday, June 2, 2026 from 8:30 a.m. to 4:30 p.m.

Member cost: \$30

Depart from and return to St. Andrew Lutheran Church

Register at the April meeting or [online at our Square page](#). Members may register ONE non-member guest for \$40. If the trip doesn't sell out, we will open registration to other non-members in late May.

Travel to the stunning and tranquil Anderson Japanese Gardens via deluxe motorcoach and experience one of the highest quality Japanese gardens in North America.

Upon arrival, you will be treated to an approximately 1 hour guided tour of their 13th century "pond strolling" garden with several waterfalls and ponds, streams, rock formations, winding paths, and sukiya style tea house and guest house. Also featured is the "Garden of Reflection" a contemporary Japanese inspired garden with bronze angel sculptures and home to many species of colorful fish, minks and ducks. Note to visitors, bottled water is permitted in the garden. No other carry in beverage or food is allowed in the garden and it is a non-smoking facility.



Afterwards we will make a side trip to Rock Valley Garden Center for shopping and browsing. Rock Valley Garden Center is highly customer rated and home to one of Illinois' finest selections of specialty annuals, perennials, shrubs, statuary and gifts. Reviews of the center consistently list it as having beautiful displays, top notch plants for great prices, and knowledgeable, friendly staff. As a reminder, our motorcoach has room for storing all of your purchases, so enjoy your shopping trip abundantly!

Bring a sack lunch, bottled water and weather appropriate attire for the excursion.

# Plant Sale News

Mary Schramer

Blooming Fest Plant Sale is May 16. We will need many volunteers to help set up for plant sale, run the sale, and help clean up afterwards. [See the garden club SignUpGenius page for all volunteer opportunities.](#)



**Blooming Fest is about a month away.** We are developing a nice inventory but we still need more plants. We have a potting party on **Saturday, April 18, in the afternoon (1-4 PM)**. This is not a mistake. We hope the weather will be kind to us and allow more of us to get into the garden and dig up plants before the potting party. Our final potting party will be on April 26 from 1 to 4. If you have plants you want to donate but can't get them to either of these events, reach out to Mary Schramer to try to work something out.

There are a limited number of nice pots available for **houseplants** and if you are propagating houseplants for the sale and need pots, let Mary Schramer know. Kindly hold onto these plants until the day of the sale and bring them to the tent by 8 AM.

We need someone to **help water plants** for several dates between now and the sale. If you can cover even one of those dates, it will help keep our plants looking their best for the sale. <https://www.signupgenius.com/go/10C0B44A5AD23A4FAC34-62838828-watering> (Scroll down the list to find the days that still say "Sign Up")

We need people to help with **pricing and labeling plants on May 9th**. We will be doing this beginning at 1 PM, rain or shine. Sign up at <https://www.signupgenius.com/go/10C0B44A5AD23A4FAC34-63517079-labeling>

**Set up for Plant Sale at Blooming Fest:** Setup tables & load the plants into the tent on **Friday, May 15**. Various times are available: <https://www.signupgenius.com/go/10C0B44A5AD23A4FAC34-63517083-plant>

**Clean up Park District Site and return items to the Barn:** Once the sale is over, there is still a little clean up needed. This year, we will load up any unused pots, trays and other items during the member only sale to return to the barn. As we empty trays on Friday before the sale, we will load these into a van to return to the barn Saturday after the sale. Volunteers are needed at the barn to help unload.

**We also need lots of boxes** to help customers gather their plants and get them to the checkout. We need members to save their boxes and flats and bring them to the tent near Galena and Main (it'll be next to El Coco Loco) on May 15 around 5 PM or May 16 before 9 AM. You can let us know you plan to bring boxes using the following link: <https://www.signupgenius.com/go/10C0B44A5AD23A4FAC34-63517135-donate>



We need a variety of box types in various sizes including:

- Box tops from copy paper
- Amazon boxes cut down to size
- Garden flats
- Produce boxes from Costco or Aldi
- Cardboard boxes used for drinks
- Flat boxes from canned foods

If you have any questions, please contact us at [WestChicagoGardenClub@gmail.com](mailto:WestChicagoGardenClub@gmail.com) or talk to a board member at the April Meeting.

More SignUps coming soon for the sale day & more!

## 2<sup>nd</sup> Saturday at the Kruse Garden

Christina Covarrubias



Thank you to all the lovely gardeners -Kerry Perry, Mary Anderson, Dick Darrah, Marilyn Santos-McNabb,

and Karen King- for volunteering their time, gardening know-how and muscles to get the garden looking ready for Spring. We filled an entire oversize truck bed\* with our winter clean out. Unfortunately, we lost a couple trees over the winter but thankfully we had a couple volunteers with very handy battery-powered chainsaws who made quick work of the trunks and branches.

Please note we will NOT have a Second Saturday gardening day in MAY since there are so many Plant Sale volunteer opportunities at the same time. We will be back with garden projects for any gardener's skill or knowledge level on Saturday, June 13th from 9-11:30am with a break at 10am. All are welcome for

any part of the morning you are able to spend in the garden.

\*Special thanks to Chuck Strayve Landscaping for donating the landscape truck for the morning and hauling away all our debris.



See News from Kruse on Page 7 for more photos.

## Spring Scholarship Awarded

Karen Sherman



The College of DuPage presented the West Chicago Garden Club's \$1,500 scholarship for the spring 2026 term to Lilian Drenthe.

In a note to our club, she wrote "Your support fuels my hard work and motivates me to strive for growth and success. I will never forget your generosity...."

Lilian is enrolled in COD's Degree Program – Sustainable Urban Agriculture. She has "a deep-

rooted interest in permaculture and growing enough food-based crops to support local citizens year-round." She is in the process of applying for an internship and hopes to be the first professional farmer in her family.

We wish Lilian much success in her endeavors.

# News from Kruse

Mary Anderson

*"April is the cruelest month."*

I had always heard this quote and thought it referred to April's fickle weather, especially the prospect of snow showers right when you thought we just couldn't get any more. But I found out T.S. Eliot was way darker—he was writing about a character in his poem who was so melancholy and despondent he rejected the rejuvenation that April represents. How could anyone hate a swath of grape hyacinths or a joyful bouquet of daffodils?



Poor man! He really needed a gardener for a friend....

The gardeners at the Kruse house definitely celebrate a new season of growth each year. But cruel April didn't allow us to get started outside, as our first April date was 38 degrees with gusty winds. So we spent our time in the Kruse house basement winter sowing and preparing for a future day of planting sprouted

seeds: zinnias, hollyhocks, coneflowers, alyssum, among others. You can find them soaking up the sun and rain by the back steps at the Kruse house, and



later on in various beds where we are confident they will flourish.

The next week we started clean-up. And on our 2nd-Saturday-of-the-Month Volunteer Day, we continued in earnest. We



tackled the Spurge Scourge, trying to get all the underground runners of this particular variety of spurge that is poisonous. We also identified some



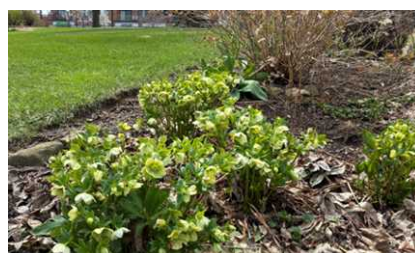
trees that winter winds battered and we had to cut them down. Power saws! And debris!

We called the landscaping company that mows at the house and they brought a truck for us to fill up. And we filled it!



So now we're almost set to get to the fun stuff. We have plans for the border garden, including a hosta hill; we are looking for ideas for the front planters; we are looking forward to Wasco coming to plant the new tulip tree; and we want to add to the fencing along the east side (no Tom Sawyering when we paint it!).

And we are just anticipating seeing the garden in its glory from month to month over the Spring and Summer and Fall, never once considering April's introduction to Spring as anything except glorious! We'd love to share all this with others, so come by to visit the garden any time.



And something else I learned recently: Being in nature can boost your attention span. The benefits are many! Be inspired to join in.

# Getting to Know: Edith Makra

Janet Frogner



**Resident of:** Winfield for 6 years.  
Love it here!

**WCGC Member:** May 2025

**How did you become a member:** Blooming' Fest. I'd attended for a couple of years and thought about it before finally pulling the trigger to join.

**What is your current/past profession:** I worked in urban forestry for 27 years and now work in sustainability for local government. I have a lot of expertise in trees.

**What are you most proud of in your garden:** I'm very proud of my pond. It is modest, but we treasure it. The water lilies and most of the rocks come from the water feature my dad built for my mom in the 70's – way before ornamental ponds were common or easy.



**A garden mistake you made:** I didn't catch a Dame's Rocket infestation early enough. It took over a large flower bed and I thought I was pulling it out and staying on top of it. I didn't realize I wasn't getting the roots and found them entangled with all of my perennials. I dug up most of the bed and tried to get the roots. I did this in May before my annual June garden party. It was awful. Now I jump on those buggers as soon as I find them.



**What do you love most about gardening:** Both the surprises and the certainties. I can count on my Lenten Roses to bloom every spring and know the flowers will last well into summer. Finding hundreds of babies under the leaves

is the surprise. Then I get to share those plants. That's all just good for my heart and soul.

**What tip or words of wisdom can you share:** Enjoy what every season has to offer. Appreciate the third and fourth dimensions of gardening – the critters and the sounds.

**What is your favorite houseplant:** I have a plumeria tree that started as a cutting nearly 50 years ago. My parents bought it at the Chicago Flower and Garden Show for \$1 when it was at the old McCormick Place. It is now more than 6 feet tall, heavy, and awkward as hell. It goes dormant in winter and looks silly. It has been through 3 moves and goes outside every spring. Most years, it rewards me with heavenly flowers. I love this plant and its history.



**Favorite garden tool:** Hoedag!  
It's a handcrafted potato harvesting tool from Idaho. It's a perfect weeder and good for transplanting too.



**Favorite flower and what do you love to grow:** There isn't one favorite flower. It depends on the season. Spring~I get excited when my fringe tree and all the peonies bloom. Summer~I love spiky plants like snapdragons, larkspur, delphiniums and lilies though I hardly have enough sun for them. I love to arrange flowers, so anything good for the vase is good for me.

**Favorite garden related place/garden you love to visit:** I have to visit a conservatory in late winter when everything is gray. I love winter but even I need to breath fresh moist air and immerse myself in vibrant green, albeit under glass. Three of my haunts are Oak Park and Garfield Park Conservatories, and Mitchell Domes in Milwaukee.

# Our Fantastic Volunteers!

Pamela Darrah

We are in the heart of "Plant Sale Season" and our club volunteers are doing a fantastic job getting everything ready. The Plant Sale is our only fundraiser and the proceeds keep our club running. If you are interested in helping out, take a look at our [SignUp Genius page](#) to find a job that you would like.

These photos show just a few of our fantastic volunteers that have been helping prepare for the plant sale. From putting up the tents at the Park District location to planting at both "Pop-up" Annual Potting Parties and the big Perennial Potting Parties.

There are many jobs for all abilities!



# Growing Native—Not Throwing Shade - Let's Talk (Arbori)Culture!

Ruth Gauss

Hi, gardening friends! I hope you are enjoying watching your garden come back to life after its winter sleep. I love checking my garden for what's popping up and especially what's blooming every day!

Because Arbor Day is this month I thought I would dive into more about great understory native trees for shadier spots in our gardens. I know it can feel like trees take up a lot of space, but they are an important part of the ecosystem, providing food for many insects, mammals, and birds as well as shelter for even more critters. When we make a plan to include them we will be including all of their friends as well, along with a whole lot of beauty!

[American Plum \(\*Prunus americana\*\)](#) is one of the most

impactful small trees and it's a beauty! It will grow to 15-25' tall and wide, will thrive in sun to part sun and has beautiful bright white blooms in the spring. The *Prunus* species supports 340 types of caterpillars (which we all know can become butterflies), including the hairstreaks.



American Plum flowers (photo from Possibility Place Nursery)



Coral Hairstreak (photo by ebrunquist)

Another type of impactful small native trees that thrive without full sun is serviceberry. There are a couple of serviceberries that can reach up to 30' in height, 10-20' in width, and they are a great option for a full sun/part shade spot in your garden.

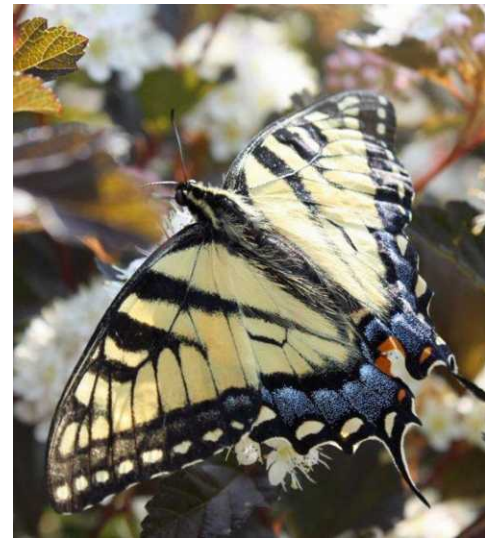
[Shadblow Serviceberry \(\*Amelanchier canadensis\*\)](#),

[Pacific Serviceberry \(\*Amelanchier interior\*\)](#), and [Allegheny Serviceberry \(\*Amelanchier laevis\*\)](#) all have white spring blooms and beautiful yellow, orange, or red fall color. They also produce fruit (not surprising, considering the name), which is edible for people and adored by wildlife, specifically birds like cedar waxwings. The foliage can be food for Tiger Swallowtail butterfly caterpillars.



Allegheny serviceberry (photo by Dan Mullen)

A common sight around most neighborhoods with good reason is [Redbud \(\*Cercis canadensis\*\)](#). With their beautiful spreading habit, heart-shaped leaves, and seemingly magical spring blooms in shades of lavender, pink, or purple, Redbud trees are a beautiful addition to the natural garden. They grow to around 15-20' tall and about 20-25' wide in part



Tiger Swallowtail Butterfly (photo by Penny Stritch)



Redbud (Photo by Peter Haynes)

## Growing Native—Page 2

Ruth Gauss

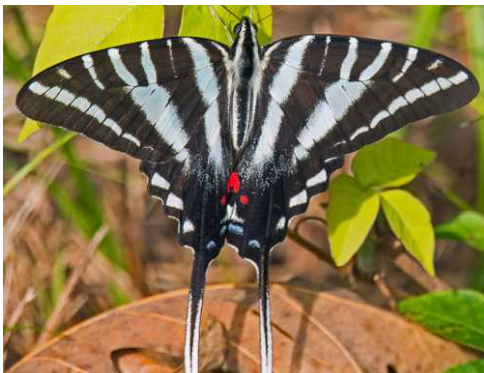
shade and will wow you with flowers that bloom on the surface of the wood everywhere on the tree. They support a wide range of insects (which we know will attract lots of birds to your yard) and also apparently are sometimes chosen by Screech Owls for roosting (a small owl for a small tree).



Eastern Screech Owl -Nick Dorian

Let's talk about the large fruiting native tree in the room - [Pawpaw \(\*Asimina triloba\*\)](#). This is not a tree that is frequently seen in suburban yards, but it is a valuable part of the ecosystem and worthy of consideration. Pawpaw trees grow to 15-20' tall and wide, unless in a grove where width is limited by its neighbors. Speaking of neighbors, you will need at least 2 Pawpaw trees to successfully produce fruit (and you can help the process along by transferring pollen by hand because the flies that pollinate Pawpaws do not always do the job). A word of warning - Pawpaw flowers are not pleasant smelling, so it might be best to plant them away from windows and seating areas that are enjoyed in the spring. As mentioned, their fruit is rather large (up to 6" long and 2" wide) and is edible, but there are very specific circumstances for them being edible for us, so if you wanted to leave them for the raccoons, opossums,

foxes, squirrels, skunks, and box turtles to eat, they would happily devour them. One of the most beautiful reasons for growing Pawpaw trees is that Zebra Swallowtail



Zebra Swallowtail Butterfly -  
Photo by David W. Brewer

butterfly larva only feed on the leaves of this species. Can you imagine watching these beauties take flight from your yard?

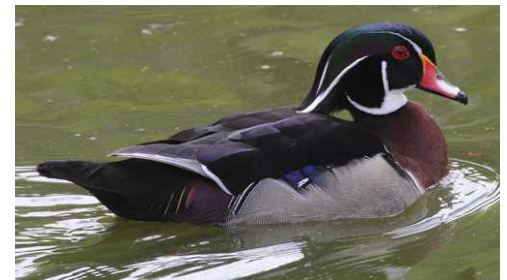
A lovely native understory tree to finish up my article is [Blue Beech \(also known as American Hornbeam, Musclemwood, and Ironwood\) \(\*Carpinus caroliniana\*\)](#).

Reaching 25-30' in height and width, its by far the largest tree I am featuring, but with its adaptability to light conditions, sun to shade, fall color in red, orange, and yellow, and nuts that are relished by numerous birds, including American Goldfinch and Wood Ducks and other wildlife, it makes a great addition to your native landscape.



Carpinus caroliniana -Photo by John Hagstrom

I hope you enjoyed our deep dive into the shady side of native trees and found this helpful.



Wood Duck

Happy native gardening and Arbor Day to all who celebrate!

# Local Events for Gardeners

Patti Pirrie

**All About Peonies. The Growing Place (Aurora, IL)  
Saturday, April 25. 11 am - 12 pm. Free entry.**

<https://www.thegrowingplace.com/event/all-about-peonies/>

Fall in love with peonies!  
This talk covers the basics of choosing, planting, and caring for peonies so they perform their best year



after year. Weather permitting, we'll wrap up with a guided walk through the garden and sales floor to see varieties up close and talk practical growing tips.

**Spring Greens: Foraging at The Forge Plant Walk. The Conservation Foundation (Lemont, IL).  
Sunday April 26. 10 am - 11:30 am. Registration required.**

<https://theconservationfoundation.org/event/spring-foraging-plant-walk/>

Join us at our Spring Greens: Foraging at The Forge Plant Walk where Eric Izzo of The Conservation



Foundation will lead a walk showing participants wild leafy greens and other wild edible plants that are common in our local landscapes. Eric will discuss plant identification, which parts of the plants to eat and how to prepare them, safety, and foraging ethics.

**Surprising Spring Flowering Trees and Shrubs. The Morton Arboretum (Lisle, IL).**

**Friday, May 1. 9:30 am - 12:30 pm. Cost: \$39. Member cost: \$32. Registration required.**

<https://mortonarb.org/explore/activities/adult-programs/surprising-spring-flowering-trees-and-shrubs/>

Statement trees and shrubs provide unique landscape interest. Go beyond our most common spring flowering landscape trees and shrubs and

discover superstar performers that aren't found in every yard. Explore the diversity of options in the classroom, then walk the Arboretum grounds to see selections at the peak of their beauty in the landscape.



**TropicFest! The Growing Place (Aurora, IL)  
Saturday May 2. 11 am-2 pm. Free entry.**

<https://www.thegrowingplace.com/event/tropicfest/>

Take a trip to the tropics! Let us teach you how to select the right tropical plants for your space and how to take care of them in our Midwestern climate. Tour the tropic houses where you can shop for plants right out of the greenhouse and surround yourself with lush, colorful, and fragrant tropical plants!



**Spring Native Plant, Shrub & Tree Sale. Citizens for Conservation (Barrington Hills)  
Sat-Sun May 2-3. 9 am - 3 pm.**

<https://citizensforconservation.org/cfc-events/spring-native-plant-sale/>

2026 marks CFC's 30th Annual Native Plant, Tree, and Shrub Sale. It has become one of the largest sales in the region, featuring more than 200 species of native forbs, grasses, trees, and shrubs. All plants are acquired from high-quality local nurseries and are grown without the use of neonicotinoid pesticides, which are toxic to pollinators.



Continued on next page

# Local Events for gardeners (Continued)

Patti Pirrie

**Herb Garden Workshop. Heinz Brothers Greenhouse Garden Center (St. Charles, IL). Monday May 11. 5-6pm. Cost: \$30. Registration required.**

<https://heinzbrothers.com/pages/informational-workshops>

Come to Heinz Brothers for some hands-on workshop fun where you'll learn to create an edible herb planter! Perfect for cooking enthusiasts and

gardeners big and small. Learn how you can grow fresh herbs right outside your kitchen door or in a windowsill indoors. Plant material, container, soil, fertilizer and recipes are included in the program fee.



Are you a more recent member and would like to know more about the Plant Sale? If you have any questions about the sale or the events leading up to it, our Plant Sale team put together a document to help introduce you to the ins and outs of the sale. This document can be found here: [WCGC Plant Sale: Everything You Ever Wanted to Know.](#)

### WCGC Plant Sale

Everything you Ever Wanted to Know

**Table of Contents:**

- What is the WCGC Plant Sale?
- When is the Plant Sale?
- Where is the Plant Sale?
- What is the cost of the Plant Sale?
- What are the benefits of the Plant Sale?
- How do I register for the Plant Sale?
- What are the rules of the Plant Sale?
- What are the terms of the Plant Sale?
- What are the conditions of the Plant Sale?
- What are the policies of the Plant Sale?
- What are the procedures of the Plant Sale?
- What are the protocols of the Plant Sale?
- What are the standards of the Plant Sale?
- What are the practices of the Plant Sale?
- What are the principles of the Plant Sale?
- What are the values of the Plant Sale?
- What are the beliefs of the Plant Sale?
- What are the attitudes of the Plant Sale?
- What are the behaviors of the Plant Sale?
- What are the actions of the Plant Sale?
- What are the consequences of the Plant Sale?
- What are the responsibilities of the Plant Sale?
- What are the roles of the Plant Sale?
- What are the relationships of the Plant Sale?
- What are the resources of the Plant Sale?
- What are the opportunities of the Plant Sale?
- What are the challenges of the Plant Sale?
- What are the solutions of the Plant Sale?
- What are the outcomes of the Plant Sale?
- What are the impacts of the Plant Sale?
- What are the legacies of the Plant Sale?

**What, Where, When, Why ...**

The WCGC Plant Sale is our main fundraiser for our club. Aside from our annual dues, this is the only revenue stream for our club. It allows us to bring in speakers for meetings, schedule workshops and field trips, cover the costs of the annual president's picnic and the member buffet, and more and more and the direct to member benefits. Our club also supports our community with donations for various garden-related causes in the West Chicago area and beyond.

The sale is held in downtown West Chicago during the Bloomington event in mid-May. The majority of the plants are dug up from our member's gardens and potted at our "Nursing Parlors".

The Plant Sale offers many opportunities for members. We get to know each other better as we work together, we learn more about plants, and we can shop at the members-only price for the best plants you'll ever find! It's also a chance for us to share our knowledge and passion for plants with the public, fulfilling our mission to "Grow Gardeners". And it's often at



**PLATT HILL NURSERY**

222 W. Lake St. • Bloomingdale  
2400 Randall Rd. • Carpentersville

We have the right plant for the right place!  
We enjoy sharing our love of plants and knowledge with our customers year round. Stop in and browse.

*For the Love of Gardening...*

COME VISIT CHICAGOLAND'S LARGEST GARDEN CENTER!

**WASCO NURSERY & GARDEN CENTER**

CELEBRATING 100 YEARS OF GROWING

41W781 ROUTE 64, ST. CHARLES, IL 60175 | 630.584.4424 | WWW.WASCONURSERY.COM

AWARD-WINNING LANDSCAPE DESIGN & BUILD WITH A THREE-YEAR GUARANTEE ON INSTALLED PLANT MATERIAL, PLUS A 10-ACRE GARDEN CENTER, A 140-ACRE TREE NURSERY, AND AN 11,000 SQ. FT. FULL-SERVICE GREENHOUSE.

Scan to learn more:



PH: 630.668.0316

[www.BarnOwlGardenCenter.com](http://www.BarnOwlGardenCenter.com)

Thank you for *90 years of growing together!* 1936-2026

Both locations open  
April 1 - December 23

Naperville // 25w471 Plank Rd.  
630.355.4000

Aurora // 2000 Montgomery Rd.  
630.820.8088

[thegrowingplace.com](http://thegrowingplace.com) //



You're invited to come explore, get inspired, learn and add some beauty to your garden at



2010 East Main St. (Rt. 64), St. Charles  
630.377.6288 [www.HeinzBrothers.com](http://www.HeinzBrothers.com)

Your Gardening Source...



# Upcoming Programs & Events for 2026

These are the currently scheduled programs. If there are any changes we will update this in future newsletters. The last column will show who has signed up to bring treats.

[Click Here](#) to download a poster with our 2026 Schedule.

Date	Speaker	Topic	Treat Volunteers
January 22	Mel Zalousek	Identifying Trees in Wintertime	Patricia P, Janette G, Roxanne W, Dotty F
February 26	Amy Powers	Pruning: Don't Be Scared	Janette G, Patricia P, Claudia F, Keith L
March 26	Dolly Foster	Plant Propagation From Stem Cuttings, Layering, and Divisions	Jean M, Margie V, Laura B, Patti P, Claudia F.
April 23	Nina Koziol	Painting Your Garden with Plants: Shade	Shirley S, Judy K, Ruth K, Barbara D, Patti P, Mary S.
May 16		<b>PLANT SALE</b>	
May 28	Ann Baker	The Blended Family: Integrating Natives into Traditional Gardens	Marion M, Mary S, Linda H, Vicki B.
June 25	Diane Smith	How to Breathe Life into Your Landscaping	Lisa H
July 23		President's Picnic	
August 27	Nicole Jagielski	Grow Your Vegetable Garden Year Round- Even in Chicago	
September 24	DuPage County Forest Preserve	Civic Outreach: Blanding's Turtle	
October 22		Bulb Bingo	Barb B, Barb M
November 19		Member Appreciation Dinner	

## Garden Bucks

West Chicago Garden Club distributes Garden Bucks (real fake money) to our members. You earn Garden Bucks by participating in club activities, volunteering at events, and donating items!

We have a Tally Sheet that you can use to help you keep track of your own Garden Bucks. We work on an honor system and you need to add up your total before the November meeting.

There will be copies available at our meetings or you can download by [Clicking Here](#).

At the November meeting you will be able to use your

**EARN AND USE THEM TO WIN PRIZES AT OUR NOVEMBER POTLUCK!**

YEAR: \_\_\_\_\_ NAME: \_\_\_\_\_

Each volunteer hour (potting plants, know garden, plant sale, etc)	\$ 100	X	_____	=	_____
Donate plants to Plant Sale (each time)	\$ 100	X	_____	=	_____
Donate pots or blinds for Plant Sale	\$ 25	X	_____	=	_____
Donate plants for Know Garden	\$ 50	X	_____	=	_____
Set up chairs & tables before meeting	\$ 50	X	_____	=	_____
Put away chairs & tables after meeting	\$ 25	X	_____	=	_____
Host Refreshment Table	\$ 100	X	_____	=	_____
Provide refreshments	\$ 75	X	_____	=	_____
Attend a monthly meeting	\$ 25	X	_____	=	_____
Bring a guest to a meeting	\$ 50	X	_____	=	_____
Attend field trip	\$ 25	X	_____	=	_____
Write newsletter article	\$ 100	X	_____	=	_____
Host Twilight Tuesday	\$ 150	X	_____	=	_____
Attend Twilight Tuesday	\$ 25	X	_____	=	_____
Pay current year dues by Feb	\$ 50	X	_____	=	_____
Pay next year's dues by Nov	\$ 75	X	_____	=	_____

GC RAFFLE: \_\_\_\_\_ TOTAL: \_\_\_\_\_  
 REGULAR RAFFLE: \_\_\_\_\_

**WE APPRECIATE YOU!**  
 Thank you for volunteering and for participating!

Bucks to enter raffles for donated items and gift cards.

Come out and volunteer. Your participation keeps our club going strong.